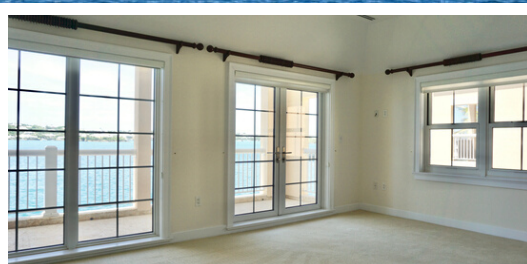


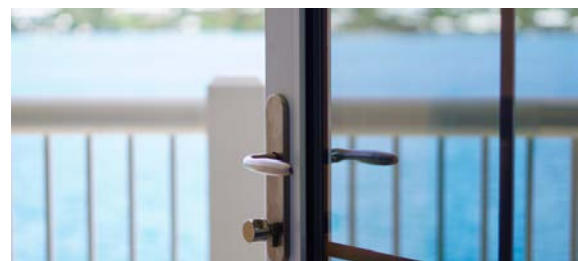
# THE RESIDENCES AT THE WATERFRONT



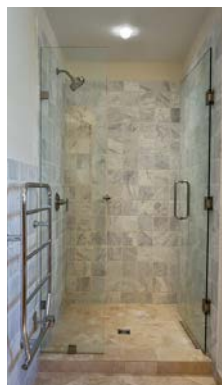
**OFFICE** The Waterfront  
Pitts Bay Road  
Pembroke, HM08

**CONTACT** Tel. 296 5722  
Email. [PropertyManager@thewaterfront.bm](mailto:PropertyManager@thewaterfront.bm)  
Web. [www.thewaterfrontproperties.bm](http://www.thewaterfrontproperties.bm)





On the picturesque Hamilton Harbour, The Residences at the Waterfront are ideally located. Offering unparalleled convenience with the island's best dining, entertainment and shopping right on the outskirts of the city centre. The homes, each with their own private patio, range from approximately 1,400 sq. ft. for a one-bedroom and 2,000 to 2,500 sq. ft. for a two-bedroom. It's not just an apartment; it's a full sized home located in a quiet gated residential community. Proximity to Hamilton, spacious homes and unbeatable views make these residences at The Waterfront one of the most desirable luxury residential communities to enjoy the Bermuda lifestyle.



The Waterfront Residences are two minutes from the City of Hamilton and seconds from Miles Market, the Waterfront Marina, Harry's Restaurant and includes the option of membership at the Waterfront's on-site health club, Waterfront Wellness.



With unique harbour views you will enjoy the convenience of city dwelling in your own relaxing retreat, which includes 24-hour security to reinforce your peace of mind.



**OFFICE** The Waterfront  
Pitts Bay Road  
Pembroke, HM08

**CONTACT** Tel. 296 5722  
Email. [PropertyManager@thewaterfront.bm](mailto:PropertyManager@thewaterfront.bm)  
Web. [www.thewaterfrontproperties.bm](http://www.thewaterfrontproperties.bm)



## AVAILABILITY

The Residences at The Waterfront currently have a two-bedroom two and a half bath townhouse style residence available. Details include:

- Two storey townhouse style residence with 2,526 sq.ft.
- Uninterrupted views of Hamilton Harbour.
- Large ground floor dockside patio with fold back door and spacious balcony off the upper master bedroom.
- Secure gated access.
- Air conditioning, pest control, landscaping and exterior maintenance included.



## FLOOR PLANS

